

The Arizona MOUNTAINEER

October 2008



Justin and Bill ascend Hornli Ridge on the Matterhorn



The Arizona Mountaineering Club
www.amcaz.org

!!! Bonus !!!

Technical Outdoor Climbing Flyer
Suitable for printing and
passing out to friends!

The Arizona Mountaineering Club

Meetings: The member meeting location is:
Phoenix Country Day School, 3901 E. Stanford Drive,
Paradise Valley, AZ 85253 at 7:00 p.m.
See calendar for day/date.

Board Meetings: Board meetings are open to all
members and are held two Mondays prior to the Club
meeting.

Dues: Dues cover January through December. A single
membership is \$30.00 per year: \$35.00 for a family.
Those joining after June 30 pay \$15 or \$18. Members
joining after October 31 who pay for a full year will
have dues credited through the end of the following year.
Dues must be sent to:

AMC Membership Committee
6519 W. Aire Libre Ave.
Glendale, AZ 85306

Schools: The AMC conducts several rock climbing,
mountaineering and other outdoor skills schools each
year. Browse the AMC website for information on
schedules and classes.

For More Information:

Email:

president@amcaz.org
board@amcaz.org

Websites:

www.amcaz.org

Mail:

Arizona Mountaineering Club
4340 E. Indian School Rd., Ste 21-164
Phoenix, AZ 85018

Board of Directors:

President John Keedy 623-412-1452
Vice-President Grant Loper 602-684-3042
Secretary Erik Filsinger 480-314-1089
Treasurer Clay Vollmer 602-595-7266
Director (1Y) Dan Beatty 480-917-7795
Director (1Y) Jodie Bostrom 623-308-5089
Director (2Y) Robert England 480-688-5412
Director (2Y) Bill Fallon 602-996-9790
Director (1Y) Danny Gonzales 602-550-8371

Committees:

Archivist Jef Sloat 602-316-1899
Classification Nancy Birdwell 602-770-8326
Elections Dave Van Hook 602-790-6283
Equipment Rental Erik Filsinger 480-314-1089
Email Robert England 480-688-5412
Land Advocacy Erik Filsinger 480-314-1089
Librarian Richard Kocher 480-966-5568
Membership Rogil Schroeter 623-512-8465
Mountaineering Bruce McHenry 602-952-1379
 Asst. Chair Grant Loper 602-684-3042
Newsletter Robert England 480-688-5412
Outings Frank Vers 480-947-9435
Programs Sheri Kenly 602-799-1288
Training & Schools.. Bill Fallon 602-996-9790
 Technical Outdoor Climbing Class Bill Fallon
 602-996-9790
 Anchors Class Justin York 480-229-8660
 Lead Class Mike Knarzer 602-751-1701
T-shirts Sally Borg 480-425-9689

The AMC Land Advocacy Committee: The Committee works by itself and with the national Access Fund to
maintain public access to climbing areas. If you know of areas that are threatened with closures or climbing restrictions,
please notify the Land Advocacy representative Erik Filsinger, 480-314-1089.

The Access Fund: This is a national, non-profit, climber's organization that works to maintain access to climbing
areas nationwide. Climbers can join The Access Fund by mailing an annual, tax-deductible donation of \$35 or more to:
The Access Fund, P.O. Box 17010, Boulder, CO 80308, or calling 888-8MEMBER or giving it to the AMC Club
Treasurer to be sent to The Access Fund in your name. A donation of \$35 or more is needed to receive *Vertical Times*,
The Access Fund newsletter. One can also join electronically at:

https://www.accessfund.org/secure/joinnow/join_indiv.php or at <https://accessfund.org/join/indiv.php>.

This Month in the AMC

Who does what, Addresses, Phone Numbers	2
Hot Stuff, Library, Birthdays, News Letter Info	3
Treasurer's Report, Discounts, Rentals	4
Board Meeting Minutes	5
Death on the Matterhorn	6
Deep Water Soloing	8
Membership Chair Position Posting, Lake Tahoe	9
October Program - Katie Brown	10
Technical Outdoor Climbing School - Instructor Meeting, NE Rope Recall	11
Technical Outdoor Climbing School Info	12
Climbing Anchors School Info	13
Ad - Arizona Hiking Shack	14
Outing Leaders	15
Calendar of Events	16
October Calendar	17
Technical Outdoor Rock Climbing Flyer	18

Newsletter

The *Arizona Mountaineer* is published monthly by the AMC. Members are encouraged to submit articles and photos about their climbing- or mountaineering-related activities. Submit items for publication (subject to approval) to AMC Editor, 2267 W Periwinkle Way, Chandler, AZ 85248 or through email to azmountaineer@amcaz.org. Prints are preferred over slides. Digital photos should preferably be in JPG format and 300 dpi. Articles can be in any standard word processing format. For more info call or write the editor at (480)-688-5412, robert_england2@yahoo.com.

Advertising in the *Arizona Mountaineer* is accepted, subject to approval, at the following rates. Personal ads are free to members. Business ads are \$5.00 for a business card, \$10.00 for half page, \$20.00 for full page, and \$25.00 for inserts.

HOT STUFF !!!

*Technical
Outdoor Climbing
School
Great Outings
Katie Brown*

Library

You must be an AMC member; I. e., your name must be on the most current membership list.

The circulation period is one month. Materials are due at the next general club meeting. The overdue fine is \$2 per title per month. Please contact the librarian if unable to return your books and tapes.

The circulation limit is three titles per person. One of these may be a videotape, for which a \$50 deposit is required. Each guidebook requires a \$25 deposit.

November Newsletter Deadline: Wednesday - Oct 15

OCTOBER BIRTHDAYS

Deke Joralmon 2, Michael Kreitz 4, Tracy Sloat 6, Kim McClintic 7, Kevin Stevens 9, Stephen Norman 10, London Lacy 12, Rogil Schroeter 12, Linda Locke 14, Greg Opland 15, Dominic Mancini 16, Samuel Garnett 17, Kevin Kriegel 18, Bill Jay 19, Brian O'Connor 19, David Van Hook 23, Cyd Manning 24, Michael Jacobson 25, Will Nicholas 26, TJ Gibson 28, Barb Berkley 29

Discount Directory

The following merchants currently offer a discount to AMC members:

- **Arizona Hiking Shack** - 11645 N. Cave Creek Rd., Phoenix, AZ 85020, (602) 944-7723. Show your AMC membership card and get a 10% discount.
- **AZ on the Rocks Gym** - 16447 N. 91st St., Scottsdale, AZ 85260. 480-502-9777. 10% off membership.
- **Phoenix Rock Gym** - 1353 E. University, Tempe, AZ 85281. 480-921-8322. 10% off membership.
- **AZ Cliffhanger** - at the Phoenix Rock Gym. 480-642-9507. 10% off merchandise.
- **Solid Rock Gym** — 23620 N. 20th Dr, Phoenix, AZ 85027 (623) 587-7625. 10% off membership.
- **Climbmax Gym** - 1330 W Auto Dr, Suite 112, Tempe, AZ 85284 - 480-626-7755. 10% off membership, Grand Opening 15% off through 4/30.
- **APE Index Rock Climbing Gym** - 9700 N. 91st Ave Suite 118 Peoria 85345 Phone 623-242-9164. 10% discount for Day Pass and Membership. Show AMC Membership card.

Rental Equipment

EQUIPMENT Qty \$Dep 1-3day4-7day

MSR Alpine snowshoes	5...	\$32	10	16
Ice Crampons.....	5...	\$26	8	13
Ice axes (70 cm)	6...	\$16	5	8
Ice axes (90 cm)	5...	\$14	5	7
Snow shovel	1	\$8	3	4

Equipment Rental Policy:

- All equipment rentals shall be only to current AMC members.
- AMC members renting equipment shall contact the Rental Committee Chair and arrange a time for pick-up and drop-off of rentals.
- Rental rates shall be as published in the AMC Newsletter.
- Two checks shall be collected from the renter.
 - The first being for the rental amount. It will be placed into AMC accounts.
 - The second check shall be a deposit held against the return of the item. It will be held and given back to the renter upon return of the equipment.
- If the return is not timely, is damaged, or is lost, the second check shall be held against the late amounts due or against any replacement or repair required.
- The AMC Member renting the equipment shall be expected to replace any lost or damaged equipment.
- An AMC rental form (found under the Forms section of the website) will be used and will identify the name and contact information of the renter, the items rented, the rent due, as well as the replacement cost, along with statements indicating the renter's responsibilities for returning or replacing the items.
- Call Bruce McHenry (602) 952-1379.

Treasurer's Report

Arizona Mountaineering Club Income Statement Period Ended August 29, 2008

INCOME

Dues 2008	7245.00
Interest.....	205.22
Rental Equipment.....	136.00
Mountaineering Schools	175.00
AARS Spring	1575.00
Basic Spring.....	3970.00
Basic Fall	960.00
Lead Spring.....	1050.00
TOTAL INCOME.....	15,316.22

EXPENSES

Admin	832.78
Bank Charges	-4.00
Insurance	661.51
Land Advocacy	493.98
Mountaineering.....	84.36
Newsletter	2262.00
Outings.....	172.00
Programs Monthly Meeting.....	2100.00
Training.....	4836.93
TOTAL EXPENSES.....	11,439.56

OVERALL TOTAL..... 3,876.66

ACCOUNT BALANCES

Checking (on 5/31/2007)	8,072.98
CD Account (matures 11/17/08).....	10,000.00
CD Account (matures 11/16/08).....	10,000.00
TOTAL CASH ASSETS.....	28,072.98

AMC Outing Gear.....	1,473.48
OVERALL TOTAL	29,546.46

NEW MEMBERS

Climbers - Please Welcome:

Bryon Adams
Tony Doucette
Jenny Hazel
Carla Howard
Jeff Howard
Timothy Leichtnam
Nichole Saltzman

AMC Board Meeting Minutes - September 8, 2008

Board members present: Clay Vollmer, Dan Beatty, Erik Filsinger, Jodie Bostrom, Grant Loper, and Bill Fallon

I. Call to order. Grant Loper, V.P., called the meeting to order at 7:00 p.m.

II. Minutes: The minutes of the August 4, 2008 Board meeting were approved as submitted.

III. Treasurers Report: Clay Vollmer presented the Treasurers Report. It was approved as submitted.

IV. Committee Reports

Programs: It was communicated that Monica Miller has respectfully declined to accept the offer of appointment. A search will continue to find a replacement for this position.

Mountaineering: Grant Loper suggested that the AMC Board back participation in the Silverton Level 1 Avalanche School. The Board approved motions that this School meets the criteria as a worthwhile learning experience and voted to review any applications from Outing Leaders to participate under the AMC's Reimbursement Policy, which limits the funding for a participant to half up to \$250/approved activity as long as funds remain.

Land Advocacy: Erik Filsinger reviewed the latest status and flow of discussion with regard to the Queen Creek Coalition and the negotiations with Resolution Copper Company. He also gave an update on the status of rock climbing in north Scottsdale.

Training and Safety: Bill Fallon and Clay Vollmer discussed the potential closure of State Trust Lands and Clay updated the Board on the pending application. Bill asked Erik to discuss possible alternatives with the city of Scottsdale staff. Bill also discussed the latest round of gear purchases.

Outings. Clay Vollmer gave a Grand Canyon Clean-Up update. Jodie Bostrom has been offering a number of outings. The Board thanked her as a newly approved OL.

Classifications: Erik Filsinger had prepared and submitted to the Board ahead of time a wording change in the approval process for Outing Leaders. The intent was to allow for Multipitch OL's to have apprentice climbs on non-AMC events as long as an approved Multipitch OL was present to give a report. This flexibility in the OL approval process was felt necessary due to the relatively few official AMC multipitch outings that are available for apprentice outings. The motion was seconded and passed unanimously. (See separate text elsewhere in this newsletter republishing the policy).

V: Old Business:

Documents on the website. The process is continuing in attempting to find and correct the AMC documents on the website.

AMC in the Marketplace: Grant Loper is chairing an ad hoc committee and will report back to the Board with a framework for discussion as well as suggested action steps.

VI: New Business:

Adjournment: The meeting was adjourned at 8:30 p.m.

Death on the Matterhorn

Erik Filsinger

I lay on the bed on the second floor of the Hotel Banhoff next to the train station in Zermatt. I glanced up at the Matterhorn. The snow still lay on the approach slopes, almost down to the Schwarzsee, the mountain lake where most folks begin the approach hike to the hut. The image from two mornings previous rolled yet once again – the Swiss Air Helicopter with the rescuer attached 30 meters below the helicopter on a long cable swinging out from the East Face and a moment later the limp body hanging 5 meters below him as it lifted and swept across the valley in front of the Hornli Hut. It is not an image one can easily forget.

The Matterhorn had been in and out of shape for the recent weeks. Bill Fallon, Justin York and I learned of the American who had died a few days prior to our arrival. We had heard, however, that a large group had ascended during the last lull in the storm cycle. Storms laying down fresh snow on the high peaks cycled across Europe every two to three days. The beautiful sunny days prior to our attempt were insufficient to melt the snow deposits. For us the challenge was more fresh snow that lay on the downward facing rocks lower on the mountain than the guides would say was “in shape.” No guides were on the mountain the day we climbed. In fact there were only 5 teams on the mountain.

As expected, given our hurried acclimatization schedule trying to catch a sunny day before the next approaching storm later that day, we were among the last teams in the ascension queue that morning; the exact last being a Russian team that had adopted us as their route finders – great lads actually. We had made consistent and solid progress on the initial dry rock, but as the snow thickened on the loose rock pile they call the Hornli Ridge we slowed. Familiar with the route alternatives, I had been watching the progress above us. One team shot out of the gate, so to speak, and as we approached Eseltritte, below the site of the old hut, they were already approaching the shoulder high above us and looking for the fixed ropes on the summit block.



Looking down the Hornli Ridge and the accumulated snows



Trift Hotel above Zermatt – actually not on the way to the Matterhorn, rather to the Zinalrothorn, our acclimatization hike.

I was greatly concerned at the time at a party of four I observed inching tentatively across the area of gray slabs below the Lower Mosley Slab. This concave area of downward sloping slabs is called the Gebiss. I saw the lead climber inch out from a bunched group of three, and then swing back, only to inch out again in another direction. They were fairly far out on the East Face.

I also noted the party of two Italians whom I recognized by their parkas. They were approaching the area of the old hut well below the Gebiss and seemed to also be very tentative.

My words to Justin and Bill were, “Hey guys, let’s talk....” We were all thinking the same thing and descended, ..., slowly. Half way up and back down again, but successfully. We had started about 5:30 a.m. and rested, a little shocked by the accident, on the Hornli Hut terrace about 3:30 p.m.

(Continued on page 7)

Death on the Matterhorn (continued)

(Continued from page 6)

The scene of the dead body being lifted from the base of the East Face unfolded as we approached the Hornli Hut on our descent. Initially we thought the second flight to the face was to get the dead man's friend who had been injured, but instead it was likely that the rescue service was merely recovering the dead man's gear.

When we had arrived back in Zermatt the next day and I had asked the woman at the Mountain Information Center if she had heard of the accident, she initially thought we were talking about the American who had been killed the week prior, and then after beginning a news search on the computer she thought we had been talking about the woman killed on Pollux the day we were at the Hornli. Scrolling further down her computer screen she then arrived at a brief story about the accident recovery we saw unfold.

She was translating from either a French or German language report from the Swiss Air Rescue service. All the account said was that a man in a party of four had slipped while temporarily unroped from his teammates. He fell 500 meters. There had been only one victim. In follow-up questioning I ascertained that the normal process for the rescue service would have been to evacuate his teammates from the mountain by helicopter. I thought I might have heard it during our descent. The guys weren't so sure.



The afternoon of the accident as the next storm arrives

Laying in bed that morning in the Hotel Banhoff and reconstructing a likely series of events, I believe here is what likely occurred. Judging from the distinct fall line based on the exact spot of the body recovery, somewhere either in ascent or descent on the Lower Mosely Slab or Gebiss the party of four had unroped. Maybe it was during a rappel, maybe during an attempt to free a stuck rope... who knows? The slabs were indeed slippery. At that point, as many others on the Hornli, the climb and rock offers relatively little protection opportunities. Mostly you and your team mates have to rely on not falling for your safety. Given the rescue timing I would not be surprised if it happened shortly after I observed the party in the middle of the likely accident scene. The poor lad slipped.

I remembered Greg Bellamy, Mark Hubble and I descending that area several years ago. As I was preparing to follow them on rappel from a belay peg both Greg and Mark commented on the precarious nature of the slabs where they waited that flow unimpeded to the glacier below. We were happy to get off the dry rock.

I believe that the team of Italian climbers with the distinctive parkas we saw descending lower on the mountain when we were rappelling a short cliff were the team immediately above us that we were gaining on when the conditions worsened. They must have turned back shortly after I had seen them because they did not have time to make it to the top and back down to catch us. Indeed I believe they lied when Justin asked them if they made it and they said they had. Heck, we could honestly say we made it too, "Off safely."

I believe the team I saw on the Shoulder was the two climbers who quite unhappily only made it back to the Hornli Hut the following morning about 5:00 a.m. As we puttered around getting ready for 7:00 a.m. breakfast they were trying to sleep in the next room. From what I saw of their faces under the blankets and their gear hanging by the entrance, I think I remember them from dinner. Their leader had ascended the lower part of the route in reconnaissance the night before and I had spoken with him briefly. Their descent must have been an epic through the snow storm that started as predicted the afternoon after we had descended to the Hut. The storm greeted us with two new inches of snow at the Hut by that morning. The only other party to account for was the party who had ascended to the site of the Old Hut, passing us both going up and down, as if out for an afternoon stroll. Very confident on their feet, they made quick progress where all others seemed tentative.

(Continued on page 8)

Death on the Matterhorn (continued)

And which among the 10 or so folks who had eaten supper at the Hut with us, or possibly someone in the couple of tents near the Hut, was the body being lifted off. I wish I could remember all the faces. I've tried to account for them. I can't. The image of the dead man swinging ungraciously below the helicopter cautioned my decisions for the rest of the trip and backed me off of less than perfect conditions afterwards, and probably to some extent for the future. I had seen accident victims, bloodied bodies, and the dead through over 30 years of mountaineering, but sometimes there is "that" body which heightens the cautionary voices to a new level.

Deep Water Solo (DSW) August 2008

Monica Miller

In August, Mike Knarzer and Frank Vers hosted the second AMC Deep Water Solo (DWS) outing. The outing was held at the Clear Creek reservoir area located just south of Winslow, AZ.

The day began by launching inflatable kayaks into the water and paddling out south for about 30 minutes to some beautiful patina cliffs. Sad to say, on the way downstream the local lake trash genre has left unsightly graffiti all over many of the cliff wall along the water way; an unfortunate disrespect for nature.

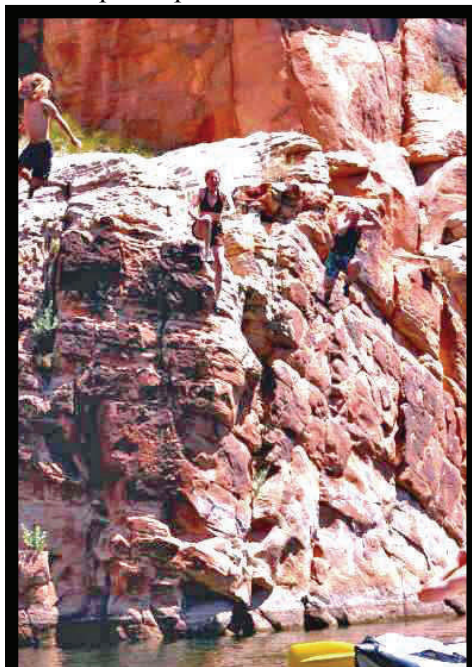
Once we arrived at my favorite area for DWS that is located toward the back of the water way your partner has to maneuver the boat so that you can get on the wall. Once you are on the wall, you start climbing or fall into the water below if you blow a move! Note to self, one must be willing to jump from as high as one climbs up. The high jumps can be a bit scary the 1st time. Ok, everyone jump on three! One, two, three, Cowa bunga! Cannon Ball! Splash!

A great day of DWS solo climbing and kayaking a new experience was had by all who participated.

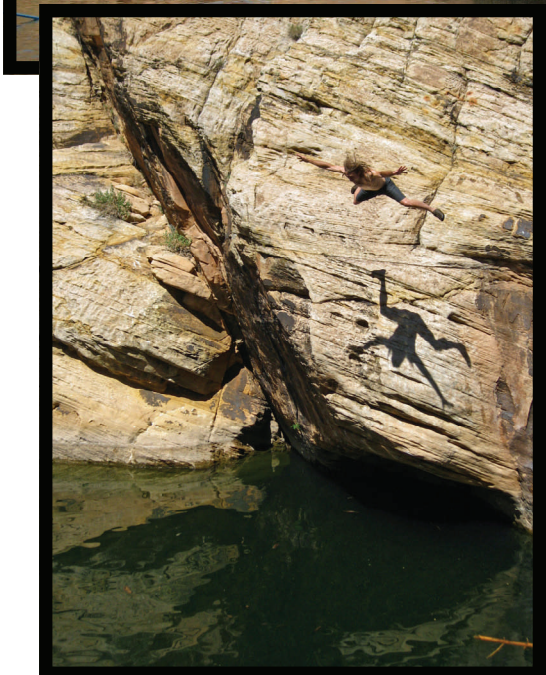
Thank you, Mike and Frank for another great outing day!



Wolfgang jumps!
Photo from Monica Miller



Mike, Christa, Monica jump!
Photo from Monica Miller



Mike Knarzer jumping in - Notice the shadow!
Photo by Brenda Oberman



Brenda and Wolfgang solo!
Photo from Monica Miller

Wanted - Membership Chairperson

I need to give up my position as Membership chair, at least for a while, as I plan to do some traveling at the end of next year.

Membership chair is not simple, but it is fun. High responsibility position. You collect data, keep it updated, and send out multiple reports each month for the other committees.

I will spend a year if needed walking you through the job. I have the job description written down in detail.

You will need PC, printer & email that handles attachments. WORKS DB editor would be good too, but we should be able to convert to another data base manager if necessary.

Attending general meetings is important too, especially in Dec, Jan & Feb.

If you think you would like to take on this job, please contact Rogil at 623-512-8465 or rogil@cox.net



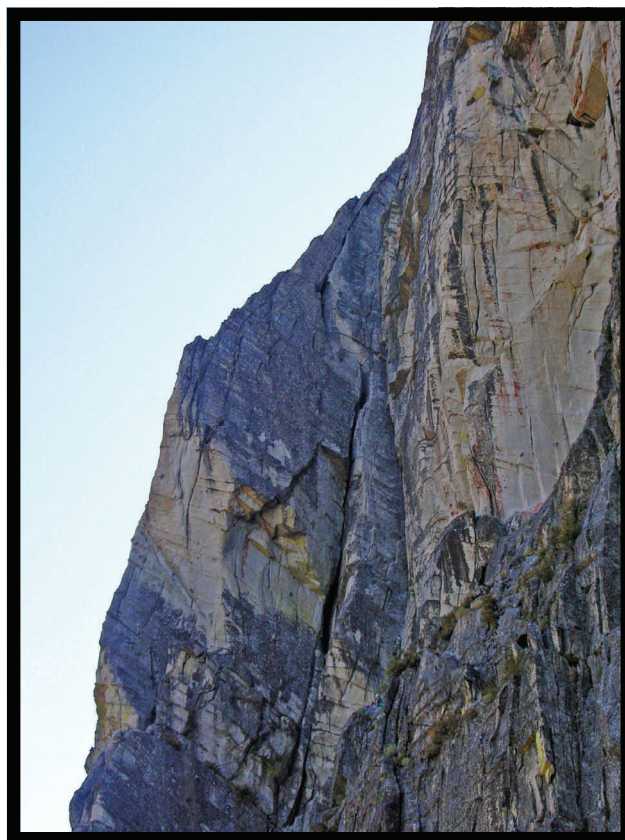
Summer get away to Lovers Leap, Lake Tahoe

Chris Meyer

Moderate Classic climbs include Bears Reach (think Dan Osman Speed video) and Curragation Corner with my climbing bud John Fritz.



Chris Meyer and Jon Fritz



Curragation Corner

On Monday, October 20th at
7:00 p.m.: AMC Programs pre-
sent:

Katie Brown

Climbing in Cochamo, Chile
Making the film, *Perfecto*, in Mallorca
A life of climbing

Katie began climbing at age 13 at the Red River Gorge in Kentucky. She quickly gained fame by winning multiple titles at X-Games, ARCO Rockmasters in Europe, and 1999's Climbing Mags "Female Climber of the Year". She was the first woman to onsight 13d and flash 14a. Recent accomplishments include onsighting 13a traditional and the route Epitaph, 5.13 on the Tombstone, Moab, Utah.

For more information on Katie, go to:

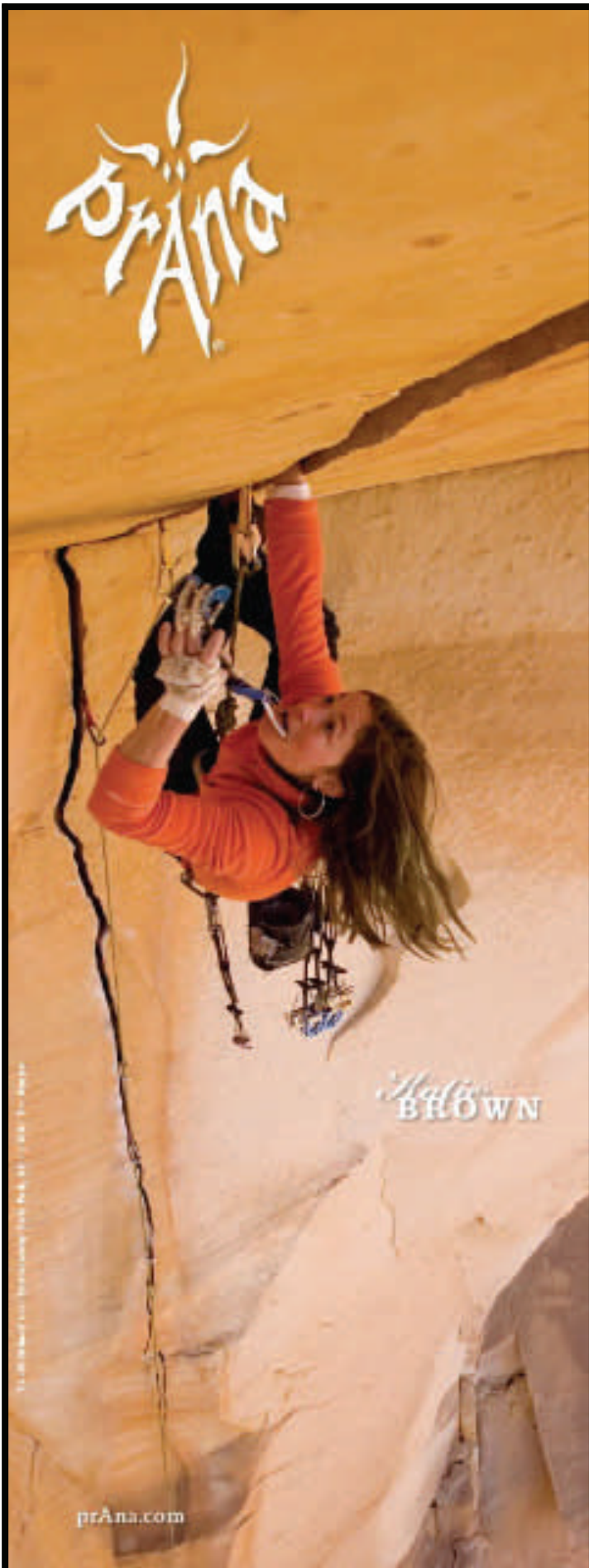
www.katiebrownclimbs.com

To view Katie climbing the route, Tombstone in Moab, go to: www.youtube.com and search for Katie Brown

See you at the Monday, October 20th 7:00 p.m. meeting! Remember it is at Phoenix Country Day School 3901 E. Stanford Drive P.V. 85253 It is between Lincoln and Camelback. From Lincoln use 36 St. and go south to Stanford and then head east. From Camelback turn left on 40th St. followed by a left on Stanford. The auditorium entrance faces the parking lot.



The Arizona Mountaineering Club
www.amcaz.org



Technical Outdoor Climbing School - Instructor Meeting

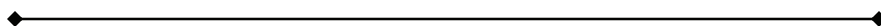
The instructor meeting for the Fall 2008 Technical Outdoor Climbing School will be at ***Jodie Bostrom's*** house at 6:02pm on Wednesday, October 8, 2008. We'll assemble gear packs for the class and organize harnesses. We'll go over the class outline and get people lined up for demos. Pizza and soda will be provided by the club. Attending the instructor meeting is not mandatory, but it's sure helpful. You don't have to call, just show up! If you can't make it, just show up for the class at North Mountain Park on October 14th, and we'll put you to work.

Directions to Jodie's: 856 E Edgemont Ave, Phoenix, AZ 85006 Take I10 to 7th Street. Turn North on 7th Street to Thomas. Turn right (East) on Thomas, take the first right on 8th St, and the first left onto Edgemont Ave. Jodie's phone number is 623.308.5089.

The Technical Outdoor Climbing School dates are:

Oct. 14	TU	5PM - 10PM	*Havasupai Ramada, North Mountain Park.
Oct. 16	TH	5:30PM – 10PM	Havasupai Ramada, North Mountain Park
Oct. 18, 19	SA, SU	8AM - 5PM	TBD.
Oct. 21, 23	TU, TH	6 PM - 10PM	Phoenix, TBD
Oct. 25	SAT	all day	Grad climbs & Grad party.

*North Mountain Park is located at Peoria and 7th St, 5 miles north of Camelback on 7th St. Turn west into the park and look for the orange traffic cones imprinted "AMC" at Havasupai Ramada.



New England Ropes - Recall

New England Ropes Recalls Climbing Lines Due to Fall Hazard

WASHINGTON, D.C. - The U.S. Consumer Product Safety Commission, in cooperation with the firm named below, today announced a voluntary recall of the following consumer product. Consumers should stop using recalled products immediately unless otherwise instructed.

Name of Product: Maxim Apogee and Maxim Pinnacle Dynamic Climbing Lines/Ropes

Units: About 530

Manufacturer: New England Ropes, of Fall River, Mass.

Hazard: The climbing lines can break, posing a serious fall hazard for climbers.

Incidents/Injuries: None.

Description: Two types of climbing ropes have been included in this recall, the Maxim Apogee 9.1mm and Maxim Pinnacle 9.5mm. The Maxim Apogee 9.1mm is a 48 carrier climbing rope. The colors are yellow and black, and red and yellow. The model numbers are 3411-91 and 3415-91, with date codes 060801 thru 080601. The UPC codes are: 75396312299, 75396312298, 75396312301, and 75396312300. The Maxim Pinnacle 9.5mm is a blue 48 carrier climbing rope. The Model number is 3403-95, with date codes 070201 thru 080601. The UPC codes are 75396312292 and 75396312293. The date codes and the UPC codes are on the original packaging.

Sold at: Retailers nationwide from August 2006 through June 2008 for between \$180 and \$262.

Manufactured in: United States

Remedy: Consumers should immediately stop using the recalled dynamic climbing lines and contact the manufacturer for a free replacement.

Consumer Contact: For more information, consumers can contact New England Ropes toll-free at (866) 617-9038 anytime or visit the firm's Web site at www.neropes.com/Climbing.Asp

<http://www.cpsc.gov/cpscpub/prerel/prhtml08/08346.html>

TECHNICAL OUTDOOR CLIMBING

FOR THE BEGINNING OUTDOOR CLIMBER

Arizona Mountaineering Club - Fall 2008

The Arizona Mountaineering Club (AMC) has been teaching outdoor rock climbing for over 35 years. We place maximum emphasis on safety and self-rescue. This is a beginning climbing class. We will teach you equipment care and usage, rope handling, climbing knots, belaying, rappelling, climbing techniques, and self-rescue. Enrollment fills up quickly, so don't delay; make a reservation to join us soon!

Class schedule (this is 2-week class):

Oct 14	Tuesday	5:30 pm–10:00 pm	* North Mountain Park, Havasupai Ramada
Oct 16	Thursday	6:00 pm–10:00 pm	North Mountain Park, Havasupai Ramada
Oct 18	Saturday	8:00 am–5:00 pm	North McDowell Mountains, Scottsdale
Oct 19	Sunday	8:00 am–5:00 pm	North McDowell Mountains, Scottsdale
Oct 21	Tuesday	6:00 pm–10:00 pm	TBA
Oct 23	Thursday	6:00 pm–10:00 pm	TBA
Oct 25	Saturday	all day	Various times, various places

*North Mountain Park is located at Peoria and 7th St, 5 miles north of Camelback on 7th St. Turn west into the park. The Havasupai Ramada is the first Ramada as you come in the park.

Experience required: None. Even if you have never climbed a tree before, this class is for you.

What is provided by the AMC:

Technical climbing gear that will be used for the school (**and is yours to keep**): 1 belay/rappel device, 2 non-locking carabiners, 3 locking carabiners, 4 prusiks, one 5' sling (subject to change)

Harness and helmet provided free by the AMC for the duration of the class if needed

Technical Outdoor Climbing climbing textbook

Instruction through all phases of the class

Discounts from local retailers on climbing gear

Equipment recommended for the class: You will wear a climbing harness at every class, so dress casually. Most sessions will be held outside, so watch the weather. Climbing shoes are recommended for the weekend sessions only. The AMC rents climbing shoes on a first-come, first-serve basis on the **second** night of class for \$10 for the class. We will discuss what to look for in a shoe on the first night of class.

Paperwork: You will be required to read, fill out and sign an AMC release of liability on the first night of class. Students under 18 must have the release signed by their parent or guardian (no students under 14 please; students 14-15 years of age must be accompanied by an older adult).

Class fee: **\$160** plus membership if not already a member (\$15 for an individual and \$18 for a family). Membership is good through Dec., 2008.

Registration: The class is limited to 40 students. To reserve a spot, send a check for \$160, \$175 or \$178 (see Class Fee above) made out to AMC Technical Outdoor Climbing School. Include your clearly printed name, address and current phone number(s). Mail to: **AMC Technical Outdoor Climbing School, 13980 W Bell Road #11-150, Surprise, AZ 85374**. No credit cards accepted.

Questions??? Contact **Eric Evans** at **623-237-3165**, or email at AMCBasicSchool@gmail.com. (Please note: \$75 is a non-refundable deposit; the rest will be returned if you cancel. If someone else can be found to take your place, the entire \$160 will be refunded.)

For more information: Visit the Arizona Mountaineering Club website at www.amcaz.org.

Climbing Anchors School

Arizona Mountaineering Club - Fall 2008

The AMC Climbing Anchors School teaches participants how to set climbing anchors for top-roping. This course is the logical next step for AMC Basic Climbing School graduates.

Class curriculum:

Tuesday:	Learn anchor components, anchor types, knots and hitches.
Thursday:	Learn anchor system characteristics and construction.
Saturday:	Gain experience setting anchors by practicing “hands-on” scenarios under instructor supervision.
Sunday:	Apply newly learned skills setting real anchors on an optional climbing day. This session is a climbing outing where students set the anchors under instructor supervision and then spend the day climbing.

Class schedule:

Nov 11	Tuesday	6:00 pm–9:30 pm	*N. Mountain Park (Phoenix), Ramada TBD
Nov 13	Thursday	6:00 pm–9:30 pm	N. Mountain Park, Ramada TBD
Nov 15	Saturday	8:00 am–4:00 pm	Climbing area to be announced during class
Nov 16	Sunday	7:00 am–5:00 pm	Climbing area to be announced during class

*North Mountain Park is located at Peoria and 7th St, 5 miles north of Camelback on 7th St. Turn west into the park. The Ramada location is TBD.

Experience required: AMC Basic School graduate or equivalent, which must include knowledge of how to belay, rapel, prusik, tie a figure-8-on-a-bight and figure-8-on-a-follow-through, and make a girth hitch.

Cost: \$75 plus membership if not already a member (\$15 for an individual and \$18 for a family). Membership is good through Dec., 2008. You can pay full membership (\$30 for an individual and \$35 for a family) and be paid up thru December 2009. Register by sending a check payable to AMC Anchors School to PO Box 11883, Tempe, AZ, 85284. No credit cards accepted. The registration fee is fully refundable if you cancel. Contact Nancy Birdwell by email: Anchors.School@amcaz.org for more info. The number of students will be limited to 36.

Equipment required for the class:

- 2 non-locking "D" or oval carabiners (at least 2, bring more if you have them)
 - 3 locking carabiners (at least 3, one of which should be a parabiner)
 - 1 rappel/belay device (Trango Jaws, Black Diamond ATC, Trango Pyramid, Figure-8, etc.)
 - 1 climbing harness
 - 1 ea 4', 6', 10' 6mm prusiks (untied length)
 - 2 ea 5', 10', 20' slings (1" tubular webbing, untied length, AKA runners)
 - 1 or 2 personal anchor slings (commercial daisy chains or 4' sewn Spectra runners or equivalent)
 - 1 helmet—**required for Saturday and Sunday sessions**, helmets are available if you do not have one.
- (The slings and harness are the only additional equipment needed over the Basic School requirements)

This class is designed to teach you how to set top-rope anchors. In order to become independent and set your own anchors, you should start acquiring anchor gear. These purchases will be limited by how much money you want/have to spend and how much interest you have in climbing independently. The following gear is not required for Anchors School, but if you have some, you will be able to practice setting it in class. All of the gear recommended below can be used for Lead School, and none of it will be wasted if you intend to set your own anchors. All gear should be marked prior to bringing it to class to prevent confusion between it and other people's gear. If you don't know how to mark gear, check with an instructor before doing so to avoid weakening equipment due to improper marking.

Other gear you may want to bring:

- Any pro you may have (hexes, nuts, camming devices, Tri-cams, etc.)
- Extra biners (regular D's, ovals, and lockers—stay away from specialty biners at this time)
- Extra slings (perhaps four 5', two 15' slings, untied lengths)

For more information: Visit the Arizona Mountaineering Club website at www.amcaz.org.



Arizona Hiking Shack
11649 N. Cave Creek Road
Phoenix, AZ 85032
Voice: (602) 944-7723
email: sales@hikingshack.com

on the web:
www.hikingshack.com
www.ahsrescue.com

Hours:
Monday – Friday 10am – 7pm
Saturday 9am – 5pm
Sunday 11am – 4pm

ROPE SALE

Sale is limited to stock on hand and can not be combined with any other discounts or specials.

MAXIM Dynamic Ropes

EQUINOX – 10.2 mm X 60 m - standard dry. Light and versatile, for sport or multi-pitch routes, the Equinox is the perfect rope for its excellent knotability and ease of clipping.

SALE PRICE \$100 (Regular price \$148)

Glider – 10.5 mm X 60 m – double dry. The Ultimate in durability the Glider series utilizes TPT sheath technology, significantly reducing drag. One of ROCK and ICE magazine's favorite all around climbing ropes.

SALE PRICE \$148 (Regular price \$210)

Apex – 10.5 mm X 70 m - standard dry. Apex series ropes offer excellent durability with extreme fall protection.

SALE PRICE \$148 (Regular price \$210)

APEX – 9.9 mm X 60 m - standard dry. Lighter version of Maxim's classic Apex dynamic rope. Designed to be pushed everyday, providing long life and safety assurance.

SALE PRICE \$120 (Regular price \$180)

PMI Dynamic Ropes

SPIRE – 10.2 mm X 60 m – Excellent all around rope. A favorite among those who want to combine maximum mileage with minimum weight

SALE PRICE \$150 (Regular price \$183)

We resole climbing shoes. Refurbish those worn out shoes with 5.10 C4 Stealth or 5.10 Onyx rubber.

Outing Leaders

Become an AMC Outing Leader

General requirements for becoming an AMC outing leader:

- Be a member for at least one year
- Take the Basic, Anchors and Lead classes (or equivalents)
- Complete a basic first aid and CPR class (8 hours or more)
- Submit an application to the Classification Chairperson
- Apprentice on at least three outings with approved outing leaders
- Get recommendation from at least five current outing leaders (including those from apprentice outings)
- Be approved by the Board of Directors.

For more information, contact the Classification Chairperson, Nancy Birdwell at (602) 770-8326.

Outing Leader

Contact Information

Sally Borg.....	480-425-9689	sallyborg@cox.net
Jodie Bostrom	623-308-5089	jodiebostrom7@msn.com
Robert England	480-688-5412	robert_england2@yahoo.com
Bill Fallon.....	602-996-9790	bill.fallon@cox.net
Erik Filsinger.....	smorefil@aol.com
Jason Garvin.....	480-734-6801	beach_bum43@hotmail.com
Richard Horst	623-434-4769
John Keedy	623-412-1452	jwkeedy@cox.net
Mike Knarzer	602-751-1701	thrashndangle@gmail.com
Tim Lange	480-598-9124
Bruce McHenry	602-952-1379
Chris Meyer.....	602-692-5912
Monica Miller	623-362-0456
Jeff Nagel	602-312-9538
Rogil Schroeter	623-512-8465	rogil@cox.net
Frank Vers.....	480-947-9435	climbbox@gmail.com
Clay Vollmer	602-595-7266	skatrash@cox.net
Justin York	480-229-8660

Your Name Here!

Calendar of Events

AMC Outings and Events

Please note: It is suggested that Outing participants donate gas money to the Outing Leader, and that carpoolers share the cost of gas for the driver. See footnotes below for other info about outings.

Oct 11-12 - Jack's Canyon. Single pitch, sport climbs on limestone in a deep cleft (canyon). No limit. Leaders camping Friday and Saturday night. Contact Jodie Bostrom.

Oct 14 - Technical Outdoor Climbing School (Oct 14, 16, 18, 19, 21, 23, 25)

Nov 1st - Queen Creek Clean Up & Climb. Let's give something back by removing the roadside trash along US 60 just north of Superior (approximately a one hour commitment). This even is hosted by John & Tiina Perlman. Climbing at the Pancake House/Throne Area will be hosted by Jodie Bostrom & Monica Miller. We will be meeting at US 60 & Stapley at 8 am. For those further east, meet at the turnoff to the Oak Flat Campground at 9 am. Email jodiebostrom7@msn.com if you plan to hang out, and Jodie will forward more detailed instructions for the meeting location.

Nov 8 Ewephoria. Multi-pitch outing at West Cochise Stronghold. 700 feet of beautiful, lichen-painted granite crack and face climbing. Cruise to the top of Sheepshead Dome with one of the best moderate routes in Cochise! You will need to be able to camp (primitive) Friday night. Cochise Stronghold is a 3 hour drive from Phoenix. If interested, contact Justin at jjy-ork@asu.edu. Limit 3.

Nov 8 The Wasteland. Multi-pitch outing on The Wasteland @ East Cochise Stronghold. This climb is considered "the best 5.8 in the STATE". If you are interested, email jodiebostrom7@msn.com. It is required that you primitive camp at Cochise on Friday, and it is suggested that you camp on Saturday night. If you stay on Saturday night, Justin York and I will be co-leading a top rope outing on Zappa Wall the following day (Nov 9th). Those on the Saturday outings are first takers on Sunday's outing at Zappa Wall. Cochise is approximately a 3 to 3.5 hour drive from Phoenix. Limit 3.

Nov 9 Zappa Wall. Justin York and Jodie Bostrom will be co-leading a top rope outing on Zappa Wall @ East Cochise Stronghold. The climbs are LONG & AMAZING! We will be primitive camping on Saturday night, which is highly recommended. Come out for the best climbing Arizona has to offer! Email jodiebostrom7@msn.com if interested. Limit 12.

Nov 11 Climbing Anchors School (November 11, 13, 15, 16)

Nov 25 The Mace 5.9, Limit 4. Frank Vers will lead this 15th annual outing to this classic Sedona climb. 4 Pitches plus the step across to the main summit. Sign the register and enjoy 360 degree views of Sedona. Do the jump across, (or Rap). You must have this climb on your resume!

Nov 27 - Thanksgiving at Joshua Tree National Park. Contact Clay Volmer.

Nov 29 - Night on Weaver's Needle. Climb and spend the night on this Arizona Classic. Long hike in, easy climbing. Limit 2. Contact Robert England

Footnotes: Car-pooling is optional on all outings and is not part of the outing. The outing begins at the trailhead designated by the Outing Leader and ends at the same place. Each participant should bring a First Aid kit. If you leave the outing, with or without the leader's permission, you are considered to be on your own until you rejoin the group. Each participant will be required to sign an AMC Activity Release Form at the beginning of the outing. Participation in AMC outings requires club membership. Outings vary in degree of danger. When you participate in an outing you should be both physically and mentally prepared and equipped with the appropriate gear. You should always be aware of the risks involved in outdoor activities and conduct yourselves accordingly. The Outing Leader is not responsible for your safety; you are. Please contact the Outing Leader before going on an outing, discussing your capabilities with the Outing Leader. You must be over 18 years of age to participate, or must be accompanied by a parent or responsible adult, and obtain prior consent from the Outing Leader. Those accompanying minors are responsible for the minor's safety.

Billboard—Other Scheduled Events

Outings listed in this section are not AMC sanctioned outings. Any AMC member can list an event he or she is planning and which is open to other AMC members. The member does not have to be an approved AMC Outing Leader. If you wish to participate you should be physically and mentally prepared with the appropriate gear and should contact the member planning the outing. You are responsible for your own safety, not the person leading the outing. You should always be aware of the risks involved in outdoor activities and conduct yourself accordingly.

Mondays Solid Rock Gym at 6pm-8pm. Call Rogil (623)-512-8465 for info.

Wednesdays North Mountain hikes after work. Rogil Schroeter (623) 512-8465

Oct 11: Half-Fast Death hike in Grand Canyon. Strenuous all day hike to river & back on some non-corridor trail, like New Hance. If interested, email rogil@cox.net or call 623-512-8465.

October 2008

AMC Outing Calendar

Sun	Mon	Tue	Wed	Thu	Fri	Sat
NOTE: Celestial events occur about 10 minutes earlier on Arizona's eastern border; 10 later on its western edge.			1 Sunrise 6:23 Sunset 6:12 M-set 7:16 P	2	3	4
5	6	7 1st Qtr	8 Sunrise 6:28 Sunset 6:03 M-set 12:05 A	9	10	11 Grand Canyon Hike, Jack's Canyon Climbing
12 Jack's Canyon Climbing	13 Board Meeting	14 Technical Outdoor Climbing Full Moon	15 Sunrise 6:33 Sunset 5:54 M-rise 6:18 P	16 Technical Outdoor Climbing	17	18 Technical Outdoor Climbing
19 Technical Outdoor Climbing	20 Member Meeting	21 Technical Outdoor Climbing Last Qtr	22 Sunrise 6:39 Sunset 5:46 M-rise 12:23 A	23 Technical Outdoor Climbing	24	25 Technical Outdoor Climbing
26	27	28 New Moon	29 Sunrise 6:45 Sunset 5:39 M-set 5:50 P	30	31 Halloween!	Nov 1: Queen Creek Cleanup and Climb

TECHNICAL OUTDOOR CLIMBING

FOR THE BEGINNING OUTDOOR CLIMBER

Presented By The
**ARIZONA
MOUNTAINEERING
CLUB**



www.amcaz.org

- Since 1964 -



Instruction (4 evenings, 3 weekend days) includes the basics of climbing equipment, climbing technique, knots, rappelling, belaying, and self-rescue.

The class fee is \$160.00, plus \$15.00 for membership (\$18.00 for families), covers equipment provided by the AMC and equipment that you get to keep including: a belay/rappel device, carabiners, prusik cords, climbing text and AMC membership for the remainder of the year.

Class Size is Limited to 40 - Reserve your spot now!

Mail a \$75.00 check, payable to the "AMC," to:

AMC Basic School

13980 W Bell Rd, #11-150

Surprise, AZ 85374

Applicants should provide, name, address, phone, e-mail address, waiver and membership form from the webpage.

For additional information, contact Eric Evans
(623.237.3165 or AMCBasicSchool@gmail.com),
or visit our website at www.amcaz.org

Fall 2008 - Class Schedule

- Oct 14 - Tue - 5:30 - 10:00 PM
- Oct 16 - Thu - 6:00 - 10:00 PM
- Oct 18 - Sat - 8:00 AM - 5:00 PM
- Oct 19 - Sun - 8:00 AM - 5:00 PM
- Oct 21 - Tue - 6:00 - 10:00 PM
- Oct 23 - Thu - 6:00 - 10:00 PM
- Oct 25 - Sat - All Day - Grad Climb

AMC Members Enjoy

- Basic to advanced rock climbing training
- Monthly meetings, outings
- Special Annual Events:
 - Grand Canyon Cleanup
 - Thanksgiving at Joshua Tree NP
- Camaraderie with other climbers
- The Arizona Mountaineer newsletter

