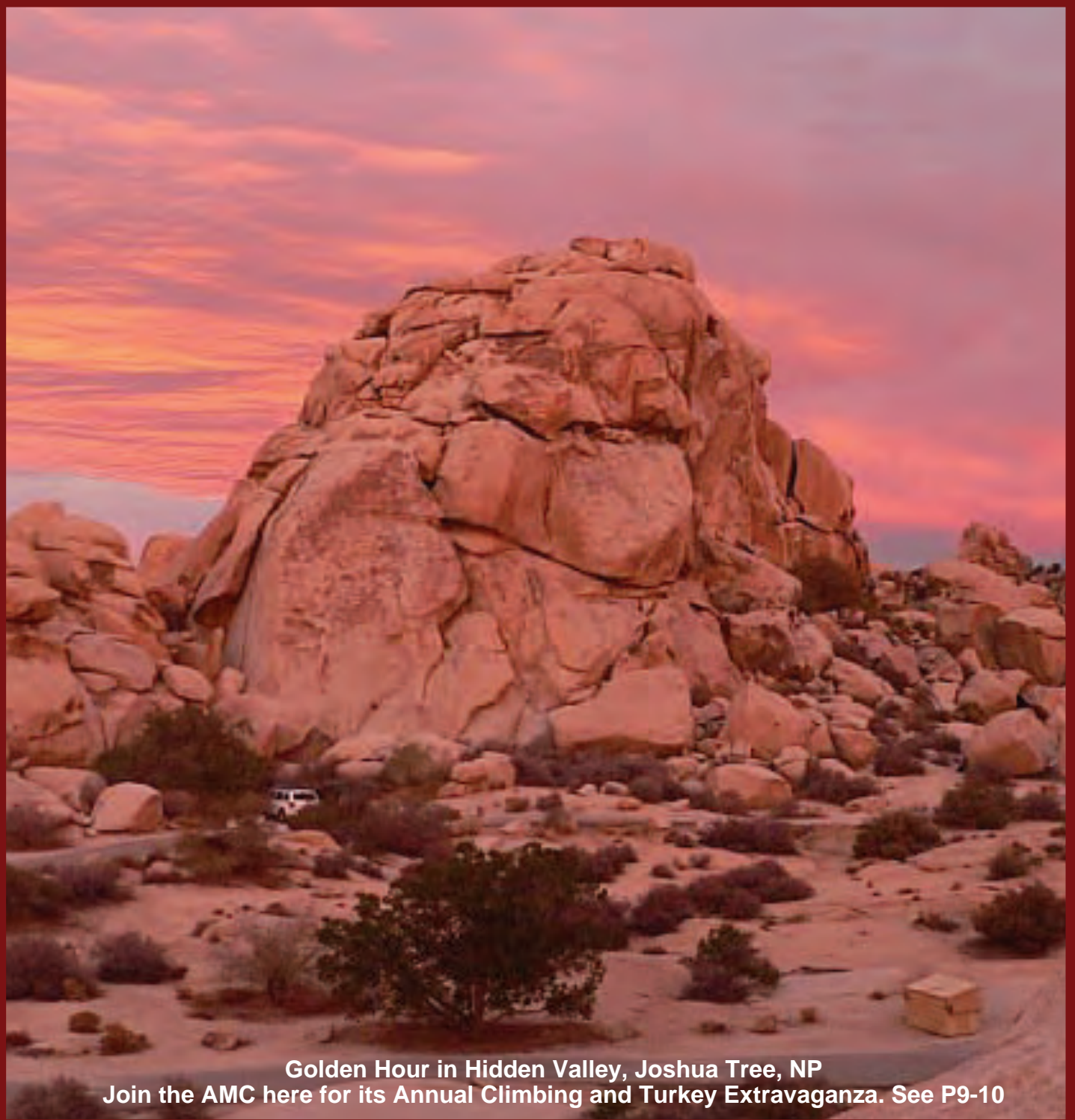


The Arizona **MOUNTAINEER**

November 2007



Golden Hour in Hidden Valley, Joshua Tree, NP
Join the AMC here for its Annual Climbing and Turkey Extravaganza. See P9-10

The Arizona Mountaineering Club

Meetings: The **November** member meeting location is:
Phoenix Country Day School
3901 E. Stanford Drive
Paradise Valley, AZ 85253. , AZ 85004 at 7:00 p.m. See
calendar for day/date.

Board Meetings: Board meetings are open to all
members and are held two Mondays prior to the Club
meeting.

Dues: Dues cover January through December. A single
membership is \$30.00 per year: \$35.00 for a family.
Those joining after June 30 pay \$15 or \$18. Members
joining after October 31 who pay for a full year will
have dues credited through the end of the following year.
Dues must be sent to:

AMC Membership Committee
6519 W. Aire Libre Ave.
Glendale, AZ 85306

Schools: The AMC conducts several rock climbing,
mountaineering and other outdoor skills schools each
year. Browse the AMC website for information on
schedules and classes.

For More Information:

Email:

president@amcaz.org
board@amcaz.org

Websites:

www.amcaz.org

Mail:

Arizona Mountaineering Club
4340 E. Indian School Rd., Ste 21-164
Phoenix, AZ 85018

Board of Directors:

President John Keedy623-412-1452
Vice-President Bill Fallon.....602-996-9790
Secretary Erik Filsinger.....480-314-1089
Treasurer..... Clay Vollmer602-595-7266
Director..... Dan Beatty480-917-7795
Director..... Danny Gonzales ..602-550-8371
Director..... Justin Iske.....480-225-7739
Director..... Sheri Kenly.....602-799-1288
Director..... Dave McClintic ...480-607-0890

Committees:

Archivist Jef Sloat602-316-1899
Classification Nancy Birdwell ...480-821-1932
Elections Dave Van Hook...602-790-6283
Equipment Rental Erik Filsinger.....480-314-1089
Email Robert England...480-688-5412
Land Advocacy Erik Filsinger.....480-314-1089
Librarian Richard Kocher ...480-966-5568
Membership..... Rogil Schroeter....623-512-8465
Mountaineering Erik Filsinger.....480-314-1089
..... Bruce McHenry ...602-952-1379
Newsletter..... Robert England...480-688-5412
Outings Frank Vers480-947-9435
Programs..... Sheri Kenly.....602-799-1288
Public Relations..... Open
Training & Schools.. Bill Fallon.....602-996-9790
..... Clay Vollmer602-595-7266
Basic Class Bill Fallon.....602-996-9790
Anchors Class Justin York480-229-8660
Lead Class Mike Knarzer602-751-1701
T-shirts..... Sally Borg.....480-425-9689
WebSite Kirrawebadmin@amcaz.org
T-shirts..... Sally Larimer.....480-425-9689
Website..... Kirra webadmin@amcaz.org

The AMC Land Advocacy Committee: The Committee works by itself and with the national Access Fund to
maintain public access to climbing areas. If you know of areas that are threatened with closures or climbing restrictions,
please notify the Land Advocacy representative Erik Filsinger, 480-314-1089.

The Access Fund: This is a national, non-profit, climber's organization that works to maintain access to climbing
areas nationwide. Climbers can join The Access Fund by mailing an annual, tax-deductible donation of \$35 or more to:
The Access Fund, P.O. Box 17010, Boulder, CO 80308, or calling 888-8MEMBER or giving it to the AMC Club
Treasurer to be sent to The Access Fund in your name. A donation of \$35 or more is needed to receive *Vertical Times*,
The Access Fund newsletter. One can also join electronically at:

https://www.accessfund.org/secure/joinnow/join_indiv.php or at <https://accessfund.org/join/indiv.php>.

This Month in the AMC

Who does what, Addresses, Phone Numbers	2
Hot Stuff, Library, Birthdays, News Letter Info	3
Treasurer's Report, Discounts, Rentals	4
New Members, President's Corner	5
Alpine Rock Seminar, Anchors Instructogram	6
AMC Board Minutes	7
Queen Creek Update	8
J-Tree Thanksgiving Flyer	9
J-Tree Thanksgiving Details	10
Adopt-A-Crag Flyer	11
Lead School Students/Instructors/Photos	12
Anchors School Flyer.....	13
Basic School in Pictures	14
AZ Cliff Hanger Ad	16
Calendar of Events	17
Outing Leaders	19
November Calendar.....	20
Wilderness First Aid Flyer.....	21

Newsletter

The *Arizona Mountaineer* is published monthly by the AMC. Members are encouraged to submit articles and photos about their climbing- or mountaineering-related activities. Submit items for publication (subject to approval) to AMC Editor, 2267 W Periwinkle Way, Chandler, AZ 85248 or through email to azmountaineer@amcaz.org. Prints are preferred over slides. Digital photos should preferably be in JPG format and 300 dpi. Articles can be in any standard word processing format. For more info call or write the editor at (480)-688-5412, robert_england2@yahoo.com.

Advertising in the *Arizona Mountaineer* is accepted, subject to approval, at the following rates. Personal ads are free to members. Business ads are \$5.00 for a business card, \$10.00 for half page, \$20.00 for full page, and \$25.00 for inserts.

HOT STUFF !!!

*Queen Creek
Update*

Anchors School

Turkey @ J-Tree!

Library

You must be an AMC member; I. e., your name must be on the most current membership list.

The circulation period is one month. Materials are due at the next general club meeting. The overdue fine is \$2 per title per month. Please contact the librarian if unable to return your books and tapes.

The circulation limit is three titles per person. One of these may be a videotape, for which a \$50 deposit is required. Each guidebook requires a \$25 deposit.

December Newsletter Deadline Wednesday - November 22

NOVEMBER BIRTHDAYS

Jon Cavalcant 3, Charles Schulz 3, Frederick Simpson 3, Michael Kelly 4, Calvin Norman 6,
Michael Tribuno 6, Larry Grant 8, Jim Watson 11, Jill Johnson 13, Susan Morris 13, Jordan Morrison 13,
Bill Berkley 14, Sheri Kenly 14, Benjamin Smith 14, Christophe Jeunot 17, Bruce Robbins 19, Eric Eaves 20,
Curt Danielsen 21, Richard Ellis 21, Mark Gordon 23, Clay Vollmer 23, Ron Klingler 24,
Stephen Van Herpen 24, Debra Carpenter 27, John Granger 28, Peter Neubauer 28,
Greg King 30, Michael Lee 30

Discount Directory

The following merchants currently offer a discount to AMC members:

Arizona Hiking Shack—11645 N. Cave Creek Rd., Phoenix, AZ 85020, (602) 944-7723. Show your AMC membership card and get a 10% discount.

AZ on the Rocks Gym — 16447 N. 91st St., Scottsdale, AZ 85260. 480-502-9777. 10% off membership.

Phoenix Rock Gym—1353 E. University, Tempe, AZ 85281. 480-921-8322. 10% off membership.

AZ Cliffhanger - at the Phoenix Rock Gym. 480-642-9507. 10% off merchandise.

Solid Rock Gym — 23620 N. 20th Dr, Phoenix, AZ 85027 (623) 587-7625 10% off membership.

Rental Equipment

<u>EQUIPMENT</u>	<u>Qty</u>	<u>\$Dep</u>	<u>1-3day</u>	<u>4-7day</u>
MSR Alpine snowshoes	5...	\$32	10	16
Ice Crampons	5...	\$26	8	13
Ice axes (70 cm)	6...	\$16	5	8
Ice axes (90 cm)	5...	\$14	5	7
Snow shovel	1...	\$8	3	4
PortaLedge	1.	\$100	30	50
Climbing shoes	Various sizes			Call

Equipment Rental Policy:

-All equipment rentals shall be only to current AMC members.

-AMC members renting equipment shall contact the Rental Committee Chair and arrange a time for pick-up and drop-off of rentals.

-Rental rates shall be as published in the AMC Newsletter.

-Two checks shall be collected from the renter.

-The first being for the rental amount. It will be placed into AMC accounts.

-The second check shall be a deposit held against the return of the item. It will be held and given back to the renter upon return of the equipment.

-If the return is not timely, is damaged, or is lost, the second check shall be held against the late amounts due or against any replacement or repair required.

-The AMC Member renting the equipment shall be expected to replace any lost or damaged equipment.

-An AMC rental form (found under the Forms section of the website) will be used and will identify the name and contact information of the renter, the items rented, the rent due, as well as the replacement cost, along with statements indicating the renter's responsibilities for returning or replacing the items.

-**For Shoes** - Call Linda Locke (602) 997-4235.

-**For everything else**, call Erik Filsinger (480) 314-1089.

Treasurer's Report

Arizona Mountaineering Club Income Statement Period Ended September 30, 2007

INCOME

Admin (holding TRSM deposits)	400.00
Advertising	295.00
Dues 2007	6,014.00
Interest	561.36
T-Shirts (AMC)	18.00
T-Shirts (Grand Canyon)	100.00
Mountaineering Schools	210.00
Rental Equipment	50.00
T&S Schools Rental Income	80.00
AARS Spring	1,650.00
Basic Spring	3,515.00
Basic Fall	1,270.00
Lead Spring	675.00
Other	270.00
TOTAL INCOME	14,308.36

EXPENSES

Admin	872.83
T-Shirts (Grand Canyon)	349.25
Land Advocacy	274.32
Mountaineering	565.97
Newsletter	1,836.46
Outings	214.73
Outing Leaders	105.40
Programs Monthly Meeting	2,777.86
Training	3,662.88
TOTAL EXPENSES	10,659.70

OVERALL TOTAL..... 3,648.66

ACCOUNT BALANCES

Checking (on 8/31/2007)	13,838.08
CD Account (on 8/17/2007)	11,060.47
TOTAL CASH ASSETS	24,898.55

AMC Outing Gear	2,147.40
OVERALL TOTAL	27,045.95

NEW MEMBERS - Climbers - Please Welcome:

Jeremiah Beltran
Hope Borselli
Jon Cavalcant
Sara Collis
Martin Czerwonka
David Day
Chandra DeLong
Cydnee Eaves
Eric Eaves
Sandy Eaves
Tyler Eaves
Pete Fuessle
Alissa Heintz
Gary Heintz
Christophe Jeunot
Traver Jones

Matthew Kern
London Lacy
George Martin
Jessica Moody
Jordan Morrison
Patricia Morrison
Christa Nobbe
Steve Oloier
Ted Osmond
Laura Reagle
Randy Steimle
Erin Stretton
Daniel Van Herpen
Stephen Van Herpen
Terri Van Herpen
Lyndzi Williams

President's Corner

The weather is getting nicer and great climbing is the order of the day for the next 6 months. As I write this, the fall schedule of rock climbing classes is just half completed. We are back to nearly maximum in the Basic class and the students are enthusiastic and showing increasing competence and confidence on the rock. To those of you who are helping and who have helped with the classes, THANK YOU VERY MUCH. Without you, it would not happen.

Frank Vers put out a challenge to all the Leaders to submit a fall and winter climb. We've had two multi-pitch outing proposals submitted already, a top rope outing and an ice climbing outing just in the first two days. That's a very good start. We have twenty-one Outing Leaders on the roster so I expect to see a lot more outings scheduled. Come on Leaders, now is your chance to show your talent.

I hope you are not completely bored and frustrated with our requests to write letters to Congress about Queen Creek/Oak Flats because the battle is not over yet. I can report that we are getting the attention of Congressional officials as well as Resolution Copper Company. Our voice is being heard loud and clear. Many of you have written letters and I have read all of them on which I was copied. They are very thoughtful and meaningful and we all appreciate your time and energy to help save Queen Creek/Oak Flats. As you know the Board of Directors unanimously voted oppose the SOUTHEAST ARIZONA LAND EXCHANGE AND CONSERVATION ACT OF 2007. That bill will simply give Resolution Copper Company and its foreign owner's unbridled authority to destroy the environment of this pristine recreation area. We don't think that is right. If you agree, go to our web site www.amcaz.org and follow the link to AMC's Own Action Alert. Kirra, Robert England and Erik Filsinger continue to work tirelessly on this issue. Many thanks to these and all who contribute.

Thanks to Mike Knarzer for teaching Lead School, thanks to Bill Fallon for teaching Basic School, thanks to Clay Vollmer for leading Grand Canyon Cleanup and especially many, many thanks to all the people who helped with these events.

John Keedy

Alpine Rock Seminar

The AMC Mountaineering Committee will offer the 1-day Alpine Rock Seminar on Saturday, December 15. The hands-on seminar is for folks with solid rock climbing skills who may be interested in taking their adventures into alpine and mountainous conditions. Topics to be covered will include: Mountainous terrain, weather, altitude, judgment, equipment and team considerations. During the field exercise, alpine rope work, including double rope techniques, route finding, alpine considerations for anchoring and belaying, alternatives for descending will be discussed and demonstrated. Silent communication will be shown and practiced.

The Seminar will be offered locally at a place yet to be determined. It is recommended that participants all have taken the AMC Basic, Anchors, and Lead Schools. This is not an introductory seminar. Rather, it is designed for those who are already accomplished in their craft but want to apply it in the mountains. If you are interested in the topic but not sure you are ready, the Alpine Rock seminar is offered yearly in the Fall.

For details or questions contact Erik Filsinger, AMC Mountaineering Chair, at smorefil@aol.com. Class fees will be \$50 for new students and \$25 for refresher students. Number of participants limited

Anchors Instructogram

AMCrs, want to increase your climbing karma? Here is your opportunity! Give back to the club by helping us teach anchors class this fall. Not only will you be sharing your passion for climbing, but you will refresh your memory of building anchor systems efficiently - one of the most important skills to climb safely.

Details: Weekday sessions will cover anchor principles and anchor construction. These will be held at N. Mtn Park on November 6 and 8 (6-9:30). Weekend sessions will cover hands-on anchor construction in real situations, culminating in a "grad anchor" and climbing on Sunday. These will be held in Prescott on November 10 and 11. We had an awesome class in the spring so let's strive to do the same this fall.

PLEASE RSVP TO JUSTIN

at

justin.j.york@asu.edu

so we can get a head-count and
start thinking about station assignments.



Board Meeting Minutes - October 8, 2007

Board members present: John Keedy, Clay Vollmer, Erik Filsinger, Sheri Kenly, Dan Beatty, Robert England and Danny Gonzales

Call to Order: A Quorum being present, the Meeting was called to order at 7:05 p.m. by President Keedy.

Minutes: The Minutes of the September 10, 2007 board meeting were reviewed and approved.

Treasurer's Report: This was presented by Clay Vollmer. Motion made, seconded, and voted for approval, as amended.

A draft of the **AMC Budget for 2008** was discussed. The Treasurer will revise and present at the November meeting for Board approval and notice to Membership. An attempt was made to adjust the budget to reflect anticipated membership levels.

Committee Reports:

Programs: Sheri Kenly reviewed several speakers she is attempting to line up over the next several months. Sheri will be stepping down and the Board is seeking interested parties.

Mountaineering: Erik Filsinger discussed planned activities and opportunities for transitions.

T&S: Lead School ended successfully (Thank you, Mike Knarzer). Basic School will be underway this week (Thank you, Bill Fallon). Grand Canyon Clean-Up was successful (Thank you, Clay Vollmer). The AMC AMGA TRSM course was discussed and missing payments will be sought from two parties occupying committed slots for the course before final budget reconciliation is made by Clay Vollmer and Erik Filsinger.

Land Advocacy: Erik Filsinger gave an update on Queen Creek. Meetings have been held with Congressional staff and representatives of Resolution Mining Company. The Board reaffirmed its opposition to the Land Exchange legislation in its current form and rejected the idea that Tamo was a replacement climbing area for the multiple climbing areas that could be lost at Queen Creek.

Library: An attempt will be made to open the Library at 6:30 p.m. on membership meetings.
Membership: 357

Outings: Several Outings were acknowledged as having been lead over the past month (Thank you Robert, Bruce and Erik).

Newsletter: Timing of the newsletter in printed and electronic format was discussed. John will communicate with Kirra, discuss the situation and seek better timing.

Old Business

Queen Creek Clean-Up and Climb: This event will occur on Saturday, October 27. John Keedy needs an Outing Leader to set up climbs and he will contact the current AMC OL's to solicit a volunteer.

Adopt-a-Crag: The 2007 AMC Adopt-a-Crag Event is being held in Scottsdale on November 3. Four Outing Leaders will lead the afternoon climbs.

Email policy: It was moved, seconded and approved that the Official AMC email distribution shall be used only for Official AMC business

New Business:

First Aid/CPR: The offering of First Aid/CPR will be held on November 17.

Grand Canyon Clean-Up and Climb: Alternative dates for 2008 will be investigated.

Dues Waivers: It was moved, seconded and approved as a new AMC policy that the President shall have the authority to, under extraordinary circumstances, offer a dues waiver to selected members.

Adjournment: The meeting was adjourned at 9:18 p.m.

Queen Creek Update

I hope you have written letters to congress. If not, shame on you as a climber. Here is our AMC web site re-source: <http://www.amcaz.org/main/members.html>

In your letters, keep the following points in mind (also for meetings, web forums, etc)

The land exchange legislation is: BAD POLICY!

The land exchange is bad public policy. Oak Flat was set aside for public recreation and to keep mining off it.

The Native Americans consider the land sacred.

The Land Exchange is a way to get around the higher level of public scrutiny and environmental oversight that would occur under a regular land patent (how they would have to do it anyway). It is shortcutting what federal policies we have in place to protect the environment and the people.

Foreign Companies should not be able to come into the US and take our vital resources without paying royalties to benefit US citizens (like US companies have to do overseas).

BAD PROCESS!

Up to this point in time the mining company had not gone to the climbing community for input. They hired an out of state boulderer who then hand picked a few friends to develop a proposed new state park without any real effort to enlist the opinions of local climbers.

BAD OUTCOME!

The license agreement for Atlantis and the Pond can be unilaterally revoked at any time by the copper company.

Eurodog Valley, the Mine Area will be lost before mining actually starts!

Both Upper and Lower Devils Canyon will be lost because access will be lost!

Tamo is NOT a replacement climbing area. While Queen Creek is 1 hr travel time, it will be closer to 2 hours (might as well go to Mt. Lemmon, Jack's, Sedona, Prescott, Flagstaff, etc).

Tamo is already public land, and why should climbers have to pay a fee to climb at the park anyway?

STOP THE LAND EXCHANGE!

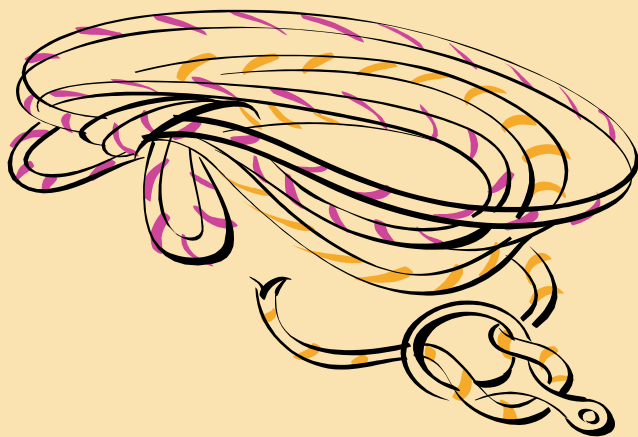
Write to your congressmen (<http://www.amcaz.org/main/members.html>)

IN THE ALTERNATIVE

If and when we can not kill the legislation, we need a minimum of:

1. permanent access to upper and lower devils canyon
2. permanent access and a change of ownership for Atlantis and the Pond (maybe a nice Superior park)
3. permanent access to Apache Leap from the West
4. we don't need a state park for Tamo; just build a road with permanent access.
5. access to oak flat, Eurodog and the mine until mining activity actually starts.

[Keep up the pressure!](#)



Thanksgiving

Climb and Dine Joshua Tree Style

November 22, 2007

Bring a dish to share.

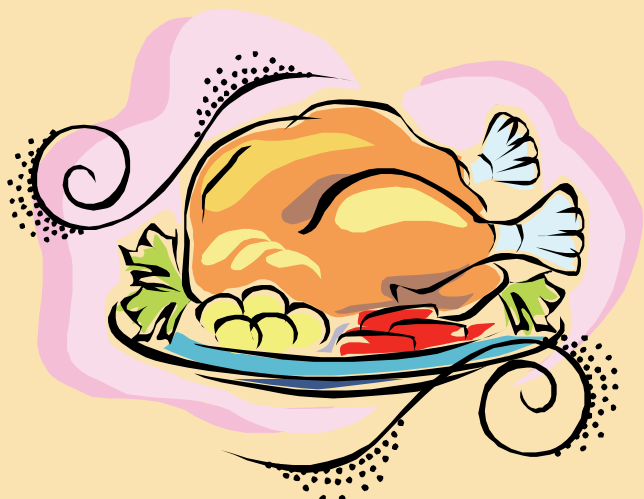
Hosted by:
Arizona Mountaineering Club

Campsite Indian Cove #2 November 22-24th

Climbing Activities
Monica Miller

Dinner Coordinator
Clay Vollmer

Sign up:
vollmer@rice.edu



Monica D. Miller

Thanksgiving Climb and Dine - Joshua Tree 2007 - An AMC Tradition

Thanksgiving at Joshua Tree is an AMC Tradition, why you may ask, the climbing at Joshua Tree is in one word -AWESOME! And the Thanksgiving Dinner is a gustatory delight of epicurean heights. Come and share in this great tradition and check out new activities and climbs!

The climbing: Hundreds of routes from 5.7 to 5.12, sport, mixed and traditional. You name it Joshua Tree has it! The leads will test your skills on great cracks and thin face. Approach time, how about a "bumper belay" while surrounded by beautiful climbing walls. For route beta, directions, camping, local activities and other information check out the following web page:

http://www.mountainproject.com/v/california/joshua_tree_national_park/105720495

Thanksgiving Day Dinner plans and Climbing activities:

Thanksgiving Dinner will be held Thursday November 22nd at 5:00 PM AZ Time (MST) at the Indian Cove Campground Group Site #2. Clay Vollmer is the Dinner Coordinator. He will fry up an 18-20 lb turkey on site served with cornbread dressing and gravy. The Dinner at JTree is potluck so here is your chance to contribute your favorite recipe. Please sign up with Clay to bring side dishes such as, salads, breads, desserts, and meats. Dishes should be prepared and ready to serve. Bring your stove to keep food warm. Bring your own utensils, beverages, dishes, and a chair for lounging around the campfire. Non-food items also needed include: lanterns, firewood and water to wash up with. Please assemble by 4:30 pm (MST) to prepare your dish to share and be ready for Thanksgiving Dinner. Email Clay Vollmer to verify your attendance at: vollmer@rice.edu or phone at 602-595-7266. A head count with any guests is important for planning.

Climbing - On Thanksgiving Day ropes will be set up for an open outing at Short Wall located in Indian Cove. Come check out some of the new routes! Outing Leader, Monica Miller and assistants are also planning to take small groups to Moosedog Tower for a summit and cool overhanging rappel. Other group climbing locations and days will be announced in camp.

Camping/Lodging Details:

Some folks may go out early; you can drive straight from work in 5 hours. There are usually about 30-40 AM-C'ers in attendance some folks go all week, some go for a day or two. If you go before Wednesday, make your own camping arrangements at <http://reservations.nps.gov/> or by phone at 1-800-365-CAMP.

Motel 6 has rooms with 2 queen beds see: <http://www.motel6.com/>

The AMC has Indian Cove Group Site #2 reserved from noon Wednesday, 11/21 through noon Sunday 11/24. Please note Parking is limited at the group site so CAR POOLING IS THE WAY TO GO.

All campsites are primitive, no water or electricity, pit toilets. Please bring wood for evening campfires. The towns of Joshua Tree and 29 Palms are about 20 minutes away if you need a meal, motel, or shower. Showers are available at Coyote Corner - 6535 Park Blvd, Joshua Tree, CA 92252 (at the intersection of Hwy 62 and the park entrance road, across from Nomad Ventures).

Directions: To get to Joshua Tree National Park, go towards Los Angeles on I-10 passing through Blythe and Desert Center. Watch for the Joshua Tree Cottonwood entrance (exit/mile marker 168). There is a \$10 entrance fee for a seven-day pass for a vehicle. Drive about one hour north through the park to a 'T' intersection. Go right (north) at the 'T' intersection to 29 Palms. Then go left (west) on Hwy 62 through 29 Palms to the turnoff to Indian Cove (left, south) from Hwy 62. If you reach the town of Joshua Tree, you have gone too far.

Weather is variable. Days are usually warm and sunny, nights will be chilly to freezing, and it is usually windy. Nothing is certain, so be prepared to get scorched, rain, snow or whatever. There are numerous guide-books available in Nomad Ventures, a local climbing shop; it is a good idea to own one for there are many geographic climbing areas in the park.

See you in Joshua Tree!

- Monica D. Miller

“Adopt a Crag”

Arizona Mountaineering Club

Adopt a Crag Trail Maintenance & Climb

Saturday November 3rd 2007

Visit our web page at:
www.azmountaineeringclub.org

Sign up with Erik Filsinger at:
smorefil@aol.com



Monica D. Miller

Lead School

Congratulations to the September 2007 Lead School Grads

And

Thank You to all of the Instructor volunteers

Students

Eric Eaves
Carolyn Lesky
Jordan Morrison
Wolfgang Rupp
Lynn St. Thomas
Erin Stretton
Mark Tallan
Kristen Towse

Instructors

Ronald Auerbach
Nancy Birdwell
David Cameron
Mike Knarzer
Rogil Schroeter
Clay Vollmer
Steve Zaporowski



AMC'rs at
Lead School
Fall 2007



*Photos courtesy of
Ron Auerbach*



Climbing Anchors School

Arizona Mountaineering Club

Fall 2007

The AMC Climbing Anchors School teaches participants how to set climbing anchors for top-roping. This course is the logical next step for AMC Basic Climbing School graduates.

Class curriculum:

- Tuesday: Learn anchor components, anchor types, knots and hitches.
Thursday: Learn anchor system characteristics and construction.
Saturday: Gain experience setting anchors by practicing "hands-on" scenarios under instructor supervision.
Sunday: Apply newly learned skills setting real anchors on an optional climbing day. This session is a climbing outing where students set the anchors under instructor supervision and then spend the day climbing.

Class schedule:

- | | | | |
|--------|----------|-----------------|---------------------------------------------|
| Nov 6 | Tuesday | 6:00 pm–9:30 pm | *N. Mountain Park (Phoenix), Yavapai Ramada |
| Nov 8 | Thursday | 6:00 pm–9:30 pm | N. Mountain Park, Yavapai Ramada |
| Nov 10 | Saturday | 8:00 am–4:00 pm | Climbing area to be announced during class |
| Nov 11 | Sunday | 7:00 am–5:00 pm | Climbing area to be announced during class |

*North Mountain Park is located at Peoria and 7th St, 5 miles north of Camelback on 7th St. Turn west into the park and drive around the loop to the last parking area at the end of the loop.

Experience required: AMC Basic School graduate or equivalent, which must include knowledge of how to belay, rappel, prusik, tie a figure-8-on-a-bight and figure-8-on-a-follow-through, and make a girth hitch.

Cost: \$75 plus membership if not already a member (\$15 for an individual and \$18 for a family). Membership is good through Dec., 2007. You can pay full membership (\$30 for an individual and \$35 for a family) and be paid up thru December 2008. Register by sending a check payable to AMC Anchors School to 1654 W. Boston St, Chandler, AZ, 85224. No credit cards accepted. The registration fee is fully refundable if you cancel. Call Nancy Birdwell at 480-821-1932 or email outdoorgirlinaz@cox.net for more information. The number of students will be limited to 36.

Equipment required for the class:

- 2 non-locking "D" or oval carabiners (at least 2, bring more if you have them)
 - 3 locking carabiners (at least 3, one of which should be a parabiner)
 - 1 rappel/belay device (Trango Jaws, Black Diamond ATC, Trango Pyramid, Figure-8, etc.)
 - 1 climbing harness
 - 1 ea 4', 6', 10' 6mm prusiks (untied length)
 - 2 ea 5', 10', 20' slings (1" tubular webbing, untied length, AKA runners)
 - 1 or 2 personal anchor slings (commercial daisy chains or 4' sewn Spectra runners or equivalent)
 - 1 helmet—**required for Saturday and Sunday sessions**, helmets are available if you do not have one.
- (The slings and harness are the only additional equipment needed over the Basic School requirements)

This class is designed to teach you how to set top-rope anchors. In order to become independent and set your own anchors, you should start acquiring anchor gear. These purchases will be limited by how much money you want/have to spend and how much interest you have in climbing independently. The following gear is not required for Anchors School, but if you have some, you will be able to practice setting it in class. All of the gear recommended below can be used for Lead School, and none of it will be wasted if you intend to set your own anchors. All gear should be marked prior to bringing it to class to prevent confusion between it and other people's gear. If you don't know how to mark gear, check with an instructor before doing so to avoid weakening equipment due to improper marking.

Other gear you may want to bring:

- Any pro you may have (hexes, nuts, camming devices, Tri-cams, etc.)
- Extra biners (regular D's, ovals, and lockers—stay away from specialty biners at this time)
- Extra slings (perhaps four 5', two 15' slings, untied lengths)

For more information: Visit the Arizona Mountaineering Club website at www.amcaz.org.

Basic School in Pictures - Fall 2007



Basic School in Pictures - Fall 2007



*Photos Courtesy of
Ben Smith and Kim Petersen*



FIVE TEN • ACOPA •

NOVEMBER HARNESS SALE

15% OFF ALL HARNESSES

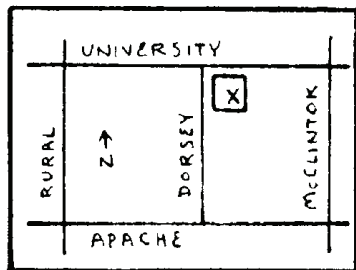
• EVOLV • MAD ROCK • RED CHILI

AZ CLIFF HANGER

- VERTICAL TOOLS -

WWW.AZCLIFFHANGER.COM

LOCATED INSIDE THE PHOENIX ROCK GYM



AZ CLIFF HANGER

MARTY KARABIN

1353 E. UNIVERSITY DR.

TEMPE, AZ 85281

PH - 480-642-9507

FAX - 480-237-0095

OPEN
WEEKDAYS
4PM - 9PM

Calendar of Events

AMC Outings

Please note: It is suggested that Outing participants donate gas money to the Outing Leader, and that carpoolers share the cost of gas for the driver. See footnotes below for other info about outings.

Footnotes: Car-pooling is optional on all outings and is not part of the outing. The outing begins at the trailhead designated by the Outing Leader and ends at the same place. Each participant should bring a First Aid kit. If you leave the outing, with or without the leader's permission, you are considered to be on your own until you rejoin the group. Each participant will be required to sign an AMC Activity Release Form at the beginning of the outing. Participation in AMC outings requires club membership. Outings vary in degree of danger. When you participate in an outing you should be both physically and mentally prepared and equipped with the appropriate gear. You should always be aware of the risks involved in outdoor activities and conduct yourselves accordingly. The Outing Leader is not responsible for your safety; you are. Please contact the Outing Leader before going on an outing, discussing your capabilities with the Outing Leader. You must be over 18 years of age to participate, or must be accompanied by a parent or responsible adult, and obtain prior consent from the Outing Leader. Those accompanying minors are responsible for the minor's safety.

Nov 10, 2007 Watson Lake Dells – Time Zone Wall. Sticky granite north of Prescott . Top rope, single pitch 5.6 - 5.9 sport climbing on fun short routes. Contact Bruce McHenry at bamchenry@att.net. Limit 10. Great area for recent Basic School graduates!

Nov 22, Thanksgiving Day - Open outing - Joshua Tree CA, Climbing will be held in the Indian Cove area at Short Wall some new routes will be set up. Summit climb planned for Moosedog Tower hosted by, Monica Miller and assistants. Bring your harness, shoes, helmet, snacks, water and your camp chair to enjoy a beautiful day in JTREE. After climbing all will head to Camp site 2 to prep for the grand finale - Thanksgiving Dinner.

Nov 24 Weaver's Needle. Climb and spend a full-moon night on top of the Superstitions' most prominent pinnacle. Three pitches, 5.5. Long, steep, uphill approach – but the view from the summit is worth it! Limit 2. Contact Robert England for details: robert_england2@yahoo.com

Dec 8 - Mt Lemmon , AZ , “The Ruins” Come and get your winter climb on and enjoy the beautiful scenery that surrounds the Ruins. Your heart rate will pulse on the steep approach up, a great trek. Watch Frank Vers beautifully master the “Duh Bulge” 5.11 a roof moves! Climbs for this trip will range from 5.8 to 5.11 hosted by Frank Vers and Monica Miller. Limit 12, email sign up with Monica at: monkmillers10@yahoo.com

Dec 15 Alpine Rock Seminar. The AMC Mountaineering Committee will hold its annual Alpine Rock Seminar on Saturday, December 15, location and time tbd. This is designed as an advanced sharing session for folks who have solid leading skills but want to venture into alpine and mountainous terrain. \$50 for new students. \$25 for refresher students. For information and details contact Erik Filsinger at smorefil@aol.com. Class size limited.

December 16, 2007 Superstition Mountains - Spiderwalk, 5.7, 600 ft. A fun and varied multi-pitch climb in the Supes, Spiderwalk ascends the North Buttress just East of Siphon Draw. Three pitches of moderate face, crack, and chimney climbing makes for adventurous climbing to a detached pinnacle with great views. A final pitch takes us up a crack on the main wall to the "eye" which you can squeeze through. A final third/fourth class pitch takes us to the top of a sharp pinnacle. Four single and double-rope rappels take us back to the ground. Expect a long day with a moderate to strenuous approach, but the effort is well worth it! Contact Justin York at justin.j.york@asu.edu. Limit 2.

Group outings are intended to be social climbing experiences with no supervision. They may or may not be organized by an AMC Outing Leader. If they are organized by an AMC Outing Leader, the Leader will only be responsible for organizing the time, date, meeting places, and any necessary camping. The AMC Outing Leader may also set anchors, but will not be responsible for supervising any climbing activity or for monitoring the anchors they set. Participants are responsible for their own climbing activities, their own climbing partners, and for monitoring anchors, whether set by an AMC Outing Leader or not. Participants are also responsible for their own conduct and safety at the campsite and during any approaches to and from the climbing areas. If any AMC equipment is used for the outing, the participants

(Continued on page 18)

Calendar of Events

using that equipment are responsible for checking the equipment before use and for using the equipment properly and in the safest manner possible. The campsite, where possible, may be reserved and paid for by the AMC. Parking may be first-come, first-served.

Billboard - Other Scheduled Events

Outings listed in this section are not AMC sanctioned outings. Any AMC member can list an event he or she is planning and which is open to other AMC members. The member does not have to be an approved AMC Outing Leader. If you wish to participate you should be physically and mentally prepared with the appropriate gear and should contact the member planning the outing. You are responsible for your own safety, not the person leading the outing. You should always be aware of the risks involved in outdoor activities and conduct yourself accordingly.

Mondays Solid Rock Gym at 6pm-8pm. Call Rogil (623)-512-8465 for info.

Wednesdays North Mountain hikes after work. Rogil Schroeter (623) 512-8465

Oct 6 Grand Canyon Half-Fast Death March. Strenuous day-hike to the river and back.
Contact Rogil@cox.net or call 623-512-8465

Commercially Provided Training and Events

The events listed below are provided by commercial outfitters for the benefit of AMC members. They are not AMC Outings, nor are they led by AMC Outing Leaders, though they may be open only to AMC members. The commercial outfitter is solely responsible for all aspects of the outing, not AMC. While, in most cases, an AMC member may provide a service by AMC collecting the names of prospective participants and handling the logistics of out-of-town events, participants will sign up directly with the commercial outfitter.

More Basic School in Pictures - Fall 2007



*Photos Courtesy of
Ben Smith and Kim Petersen*

Outing Leaders

Become an AMC Outing Leader

General requirements for becoming an AMC outing leader:

- Be a member for at least one year
- Take the Basic, Anchors and Lead classes (or equivalents)
- Complete a basic first aid and CPR class (8 hours or more)
- Submit an application to the Classification Chairperson
- Apprentice on at least three outings with approved outing leaders
- Get recommendation from at least five current outing leaders (including those from apprentice outings)
- Be approved by the Board of Directors.

For more information, contact the Classification Chairperson, Nancy Birdwell at (480) 821-1932.

Outing Leader

Contact Information

Sally Borg.....	480-425-9689	sallyborg@cox.net
Robert England	480-688-5412	robert_england2@yahoo.com
Bill Fallon.....	602-996-9790	bill.fallon@cox.net
Erik Filsinger.....	-----	smorefil@aol.com
Jason Garvin.....	480-734-6801	beach_bum43@hotmail.com
Scott Hoffman	623-580-8909	
Richard Horst	623-434-4769	
John Keedy	623-412-1452	
Mike Knarzer	602-751-1701	getout@cox.net
Tim Lange	480-598-9124	
David Larimer	602-258-0373	
Bruce McHenry	602-952-1379	
Tim Medlock.....	480-963-3496	
Monica Miller	623-362-0456	
Jeff Nagel	602-312-9538	
Matt Percy	480-326-3463	percy.matthew@gmail.com
Rogil Schroeter	623-512-8465	rogil@cox.net
Jef Sloat.....	602-316-1899	
Paul Valenzuela.....	602-705-3106	
Frank Vers.....	480-947-9435	
Justin York	480-229-8660	

Your Name Here!

November 2007

AMC Outing Calendar

Sun	Mon	Tue	Wed	Thu	Fri	Sat
NOTE: Celestial events occur about 10 minutes earlier on Arizona's eastern border; 10 later on its western edge.			Sunrise 6:46 Sunset 5:37 M-rise 10:58 P	1 Last Qtr	2	3 Adopt-A-Crag
4	5	6 Anchors School	7 Sunrise 6:52 Sunset 5:31 M-set 4:08 P	8 Anchors School	9 New Moon	10 Anchors School, Watson Lake
11 Anchors School	12 Board Meeting	13	14 Sunrise 6:59 Sunset 5:26 M-set 9:08 P	15	16	17 1st Qtr
18	19	20	21 J-Tree Sunrise 7:05 Sunset 5:23 M-rise 3:08 P	22 Thanksgiving at Joshua Tree NP	23 J-Tree	24 J-Tree Weaver's Needle Full Moon
25 J-Tree	26 Member Meeting	27	28 Sunrise 7:12 Sunset 5:21 M-rise 9:50 P	29	30	

What a great day.
But are you ready for
"What if?"

Since 1976, SOLO has taught
over 100,000 people the vital
skills of wilderness medicine.

We teach courses across the
country and around the world.

Be ready.

Wilderness First Aid
Wilderness First Responder
Wilderness EMT
Rescue
Leadership

SOLO
Conway, NH
soloschools.com
info@soloschools.com
603.447.6711



Wilderness First Aid

2-Day Course

**December 1 (Saturday)
&
December 2 (Sunday)
8:00 AM – 5:00 PM**

**Lake Pleasant
Desert Outdoor Center**

41402 North 87th Avenue
Peoria, AZ 85383

**To register or for more
information**

medical@mcsomr.org

602-321-5667



www.soloschools.com

www.mcsomr.org